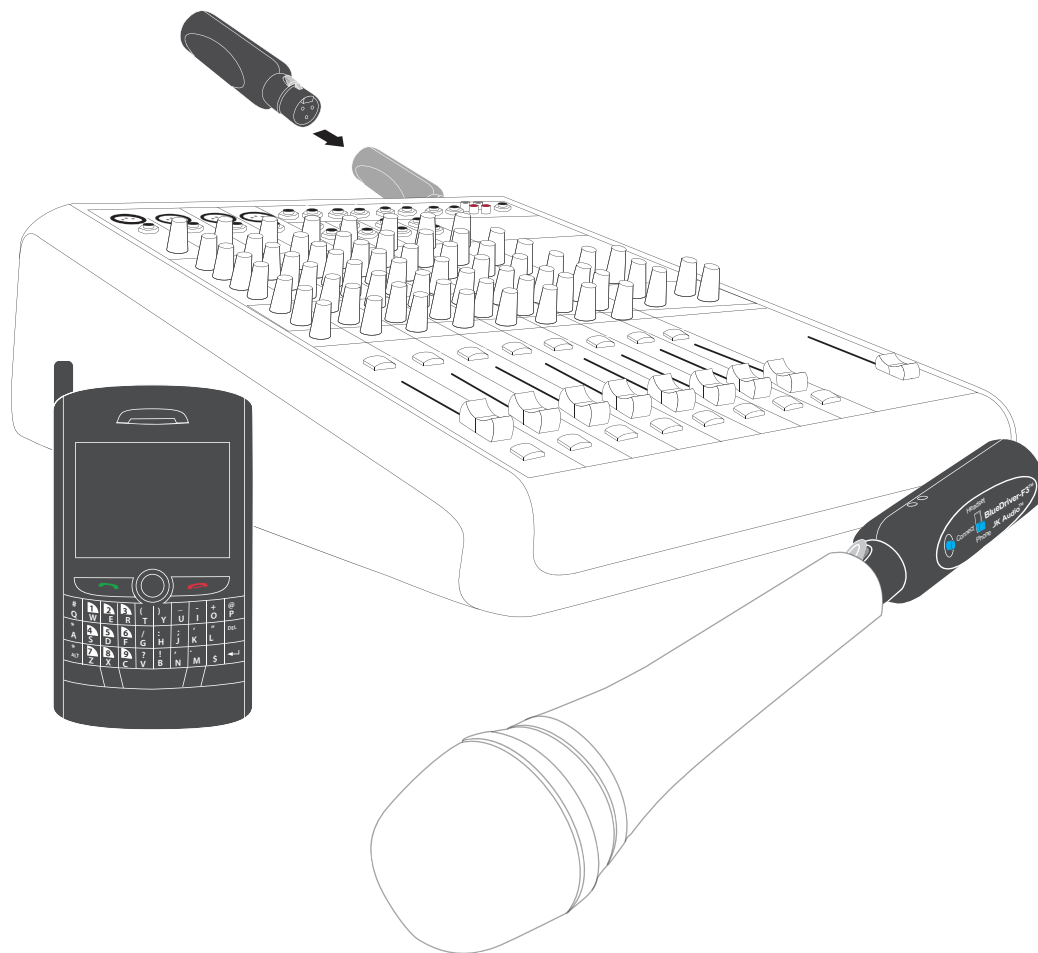


BlueDriver-F3™ CONNECT APPLICATIONS

WIRELESS AUDIO INTERFACE



JK Audio™

1311 East 6th Street
Sandwich, IL 60548 USA

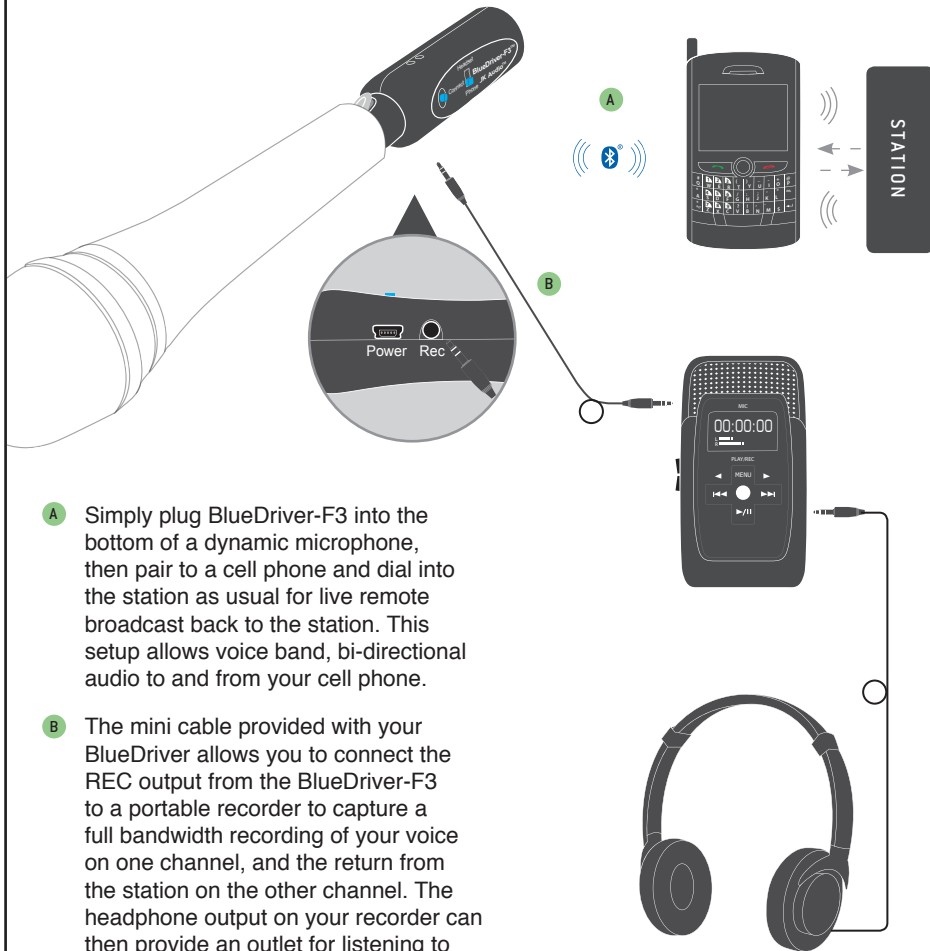
TELEPHONE AUDIO INTERFACE PRODUCTS

Phone: 815 786 2929
Toll Free: 800 552 8346

www.jkaudio.com
Copyright © 2010

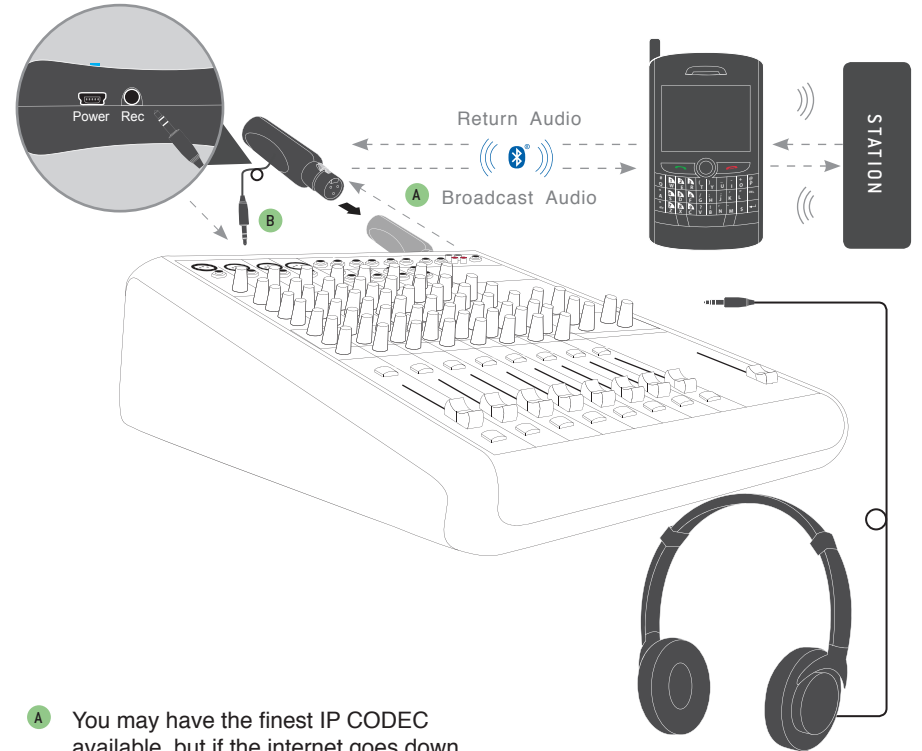


1 LIVE MAN-ON-THE-STREET INTERVIEWS



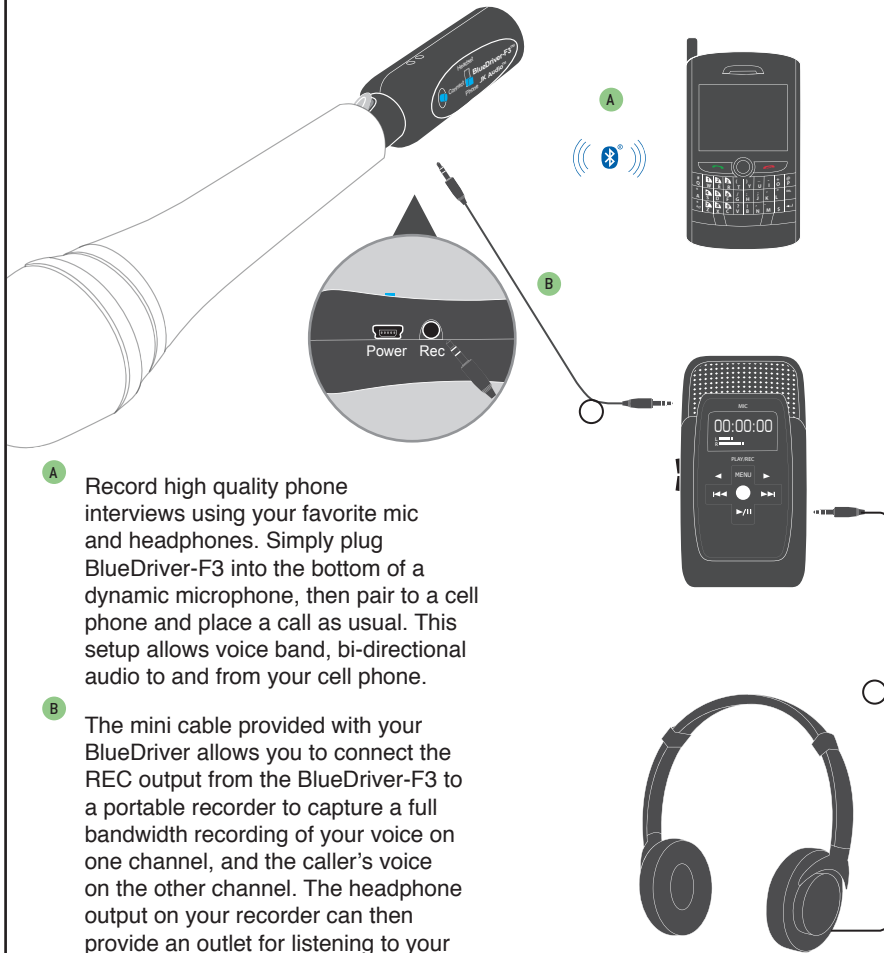
- A** Simply plug BlueDriver-F3 into the bottom of a dynamic microphone, then pair to a cell phone and dial into the station as usual for live remote broadcast back to the station. This setup allows voice band, bi-directional audio to and from your cell phone.
- B** The mini cable provided with your BlueDriver allows you to connect the REC output from the BlueDriver-F3 to a portable recorder to capture a full bandwidth recording of your voice on one channel, and the return from the station on the other channel. The headphone output on your recorder can then provide an outlet for listening to your voice as well as the return audio from the cell phone.

2 BACKUP AUDIO FOR REMOTE BROADCASTS



- A** You may have the finest IP CODEC available, but if the internet goes down, there goes the remote. Simply plug BlueDriver-F3 into the master audio output of your mixer or CODEC. Pair to your cell phone which is dialed into the station. This setup allows voice band audio, through your cell phone, back to the station.
- B** The mini cable provided with your BlueDriver allows you to connect the REC output from the BlueDriver-F3 to a mic-level 3.5 mm input on your mixer (if available) to allow for monitoring the return audio from the station.

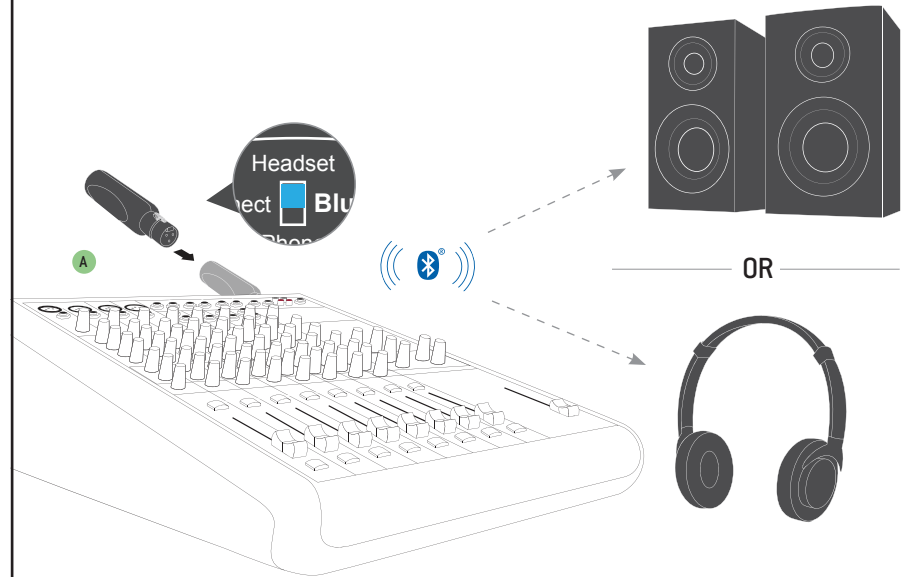
3 RECORD PHONE INTERVIEWS



A Record high quality phone interviews using your favorite mic and headphones. Simply plug BlueDriver-F3 into the bottom of a dynamic microphone, then pair to a cell phone and place a call as usual. This setup allows voice band, bi-directional audio to and from your cell phone.

B The mini cable provided with your BlueDriver allows you to connect the REC output from the BlueDriver-F3 to a portable recorder to capture a full bandwidth recording of your voice on one channel, and the caller's voice on the other channel. The headphone output on your recorder can then provide an outlet for listening to your voice as well as the return audio from the cell phone.

4 TRANSMIT BLUETOOTH A2DP AUDIO



A The "Headset" mode of BlueDriver-F3 connects to Bluetooth headphones or wireless speakers, and provides full 20 kHz audio bandwidth A2DP audio. Simply plug BlueDriver-F3 into the audio output of your mixer or playback system, then pair to your headphones or speaker. Keep in mind that Bluetooth A2DP processing adds a 150 millisecond delay, so this application is more appropriate for pre-recorded or

broadcast applications that do not have a live mic or interactive conversation. Also keep in mind that the 3 pin XLR is a balanced mono connection. BlueDriver-F3 sends the mono XLR signal to both left and right channels of the Stereo A2DP Bluetooth signal. A2DP is a one-way transmission, with nothing coming back on the return channel.

BlueDriver-M3™ + BlueDriver-F3™ APPENDIX

WIRELESS AUDIO INTERFACE

BROADCAST HIGH QUALITY AUDIO THROUGH OUR WIRELESS LINK

A

A If you are playing pre-recorded or broadcast material and can accept a 150 millisecond delay, our BlueDriver-F3 ("Headset" mode) and BlueDriver-M3 ("Phone" mode) can be paired together to create a mono 20 kHz, full audio bandwidth wireless link. Range is limited to 30 feet, but this may be just enough for your application. A2DP is a one-way transmission, with nothing coming back on the return channel.

"MIX-MINUS" SETUP

A On whichever input channel you have the BlueDriver-M3™ connected, turn the corresponding Aux or FX control to minimum. All other input channel Aux controls should be at their desired settings for the "Mix-Minus" feed returning to the BlueDriver-M3™.

B Connect the FX Send output to the Send input on the BlueDriver-M3™. The FX Send output will send all audio except the caller audio.

The Aux or FX Send bus is completely separate from all other outputs, so these Aux controls will not affect what is heard on the Main outputs or on any other Aux or FX buses.

JK Audio™

TELEPHONE AUDIO INTERFACE PRODUCTS

1311 East 6th Street
Sandwich, IL 60548 USA

Phone: 815 786 2929
Toll Free: 800 552 8346

www.jkaudio.com
Copyright © 2010

